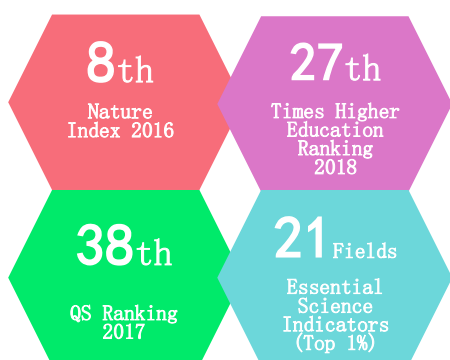


# RESEARCH AT PEKING UNIVERSITY (2017)

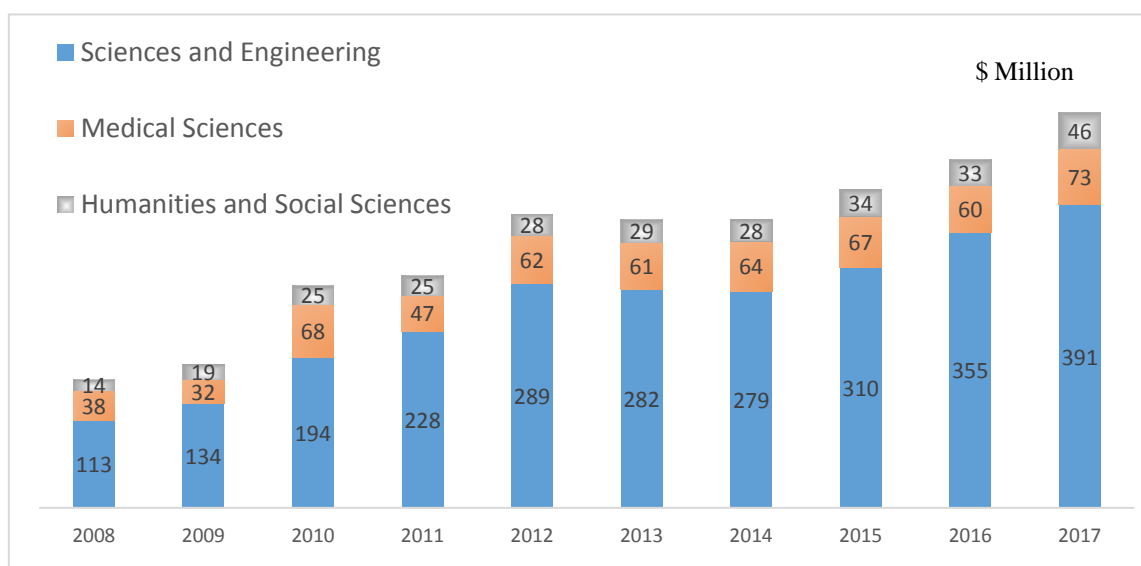


## UNIVERSITY RANKINGS

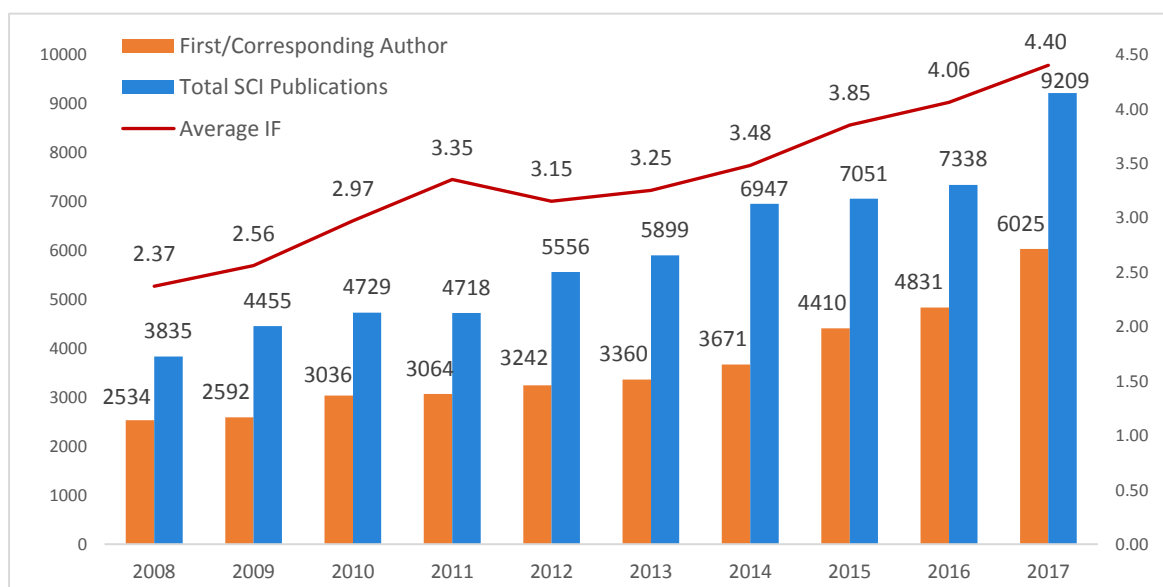


Faculty'	Professor	Associate Professor	Assis. Professor and Others
Sciences & Engineering	701	541	201
Medical Sciences	190	277	242
Humanities & Social Sciences	575	505	182

## EXTERNAL COMPETITIVE RESEARCH FUNDING



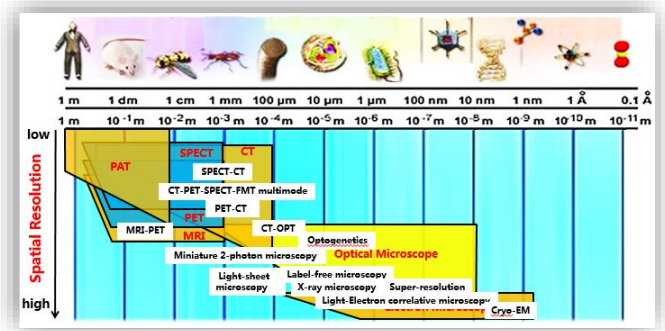
## PUBLICATIONS



## RESERACH STRATEGY: FACILITIES DEVELOPMENT

### National Major S&T Infrastructure

- ◇ *Multi-Mode Spanning-Scale Biomedical Imaging* (initial budget \$270 Million (2018-2020)).



## FUNDING MECHANISM INNOVATION

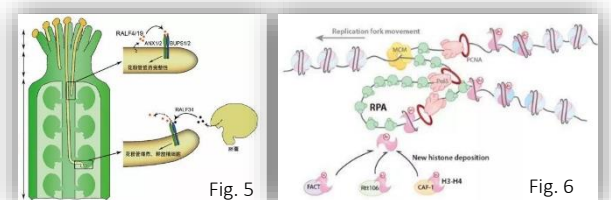
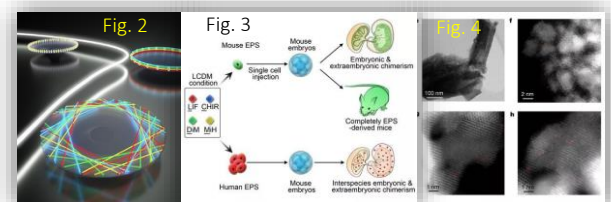
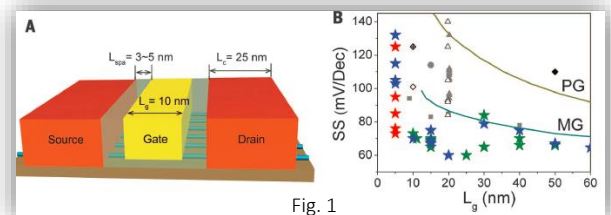
### Beijing Advanced Innovation Centers

(\$14.6 Million per year per center, established in 2015)

- ◇ *Engineering Science and Advanced Technology*
- ◇ *Genomics*

## RESEARCH HIGHLIGHTS

- ◇ *Carbon Nanotube Transistors and Carbon based Integrated Circuits (Fig.1)*. Prof. PENG LianMao and ZHAND Zhiyong.
- ◇ *Chaos-assisted broadband momentum transformation in optical microresonators (Fig.2)*. Prof. GONG Qihuang and XIAO Yunfeng.
- ◇ *Derivation of Pluripotent Stem Cells with In Vivo Embryonic and Extraembryonic Potency (Fig.3)*. Prof. DENG Hongkui
- ◇ *Low-temperature hydrogen production from water and methanol using Pt/alpha-MoC catalysts(Fig.4)*. Prof. MA Ding
- ◇ *Arabidopsis pollen tube integrity and sperm release are regulated by RALF-mediated signaling (Fig.5)*. Prof. QU Lijia
- ◇ *RPA binds histone H3-H4 and functions in DNA replication-coupled nucleosome assembly (Fig.6)*. Prof. LI Qing



## Contact US

Office of Scientific Research, <http://www.research.pku.edu.cn/>

Dr. FAN Shaofeng, [fsf@pku.edu.cn](mailto:fsf@pku.edu.cn)